

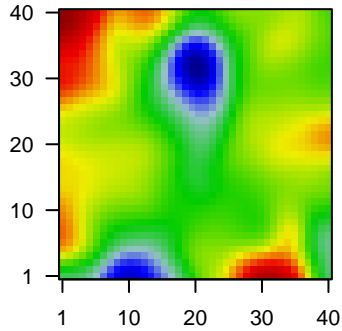
41387E

Global Summary

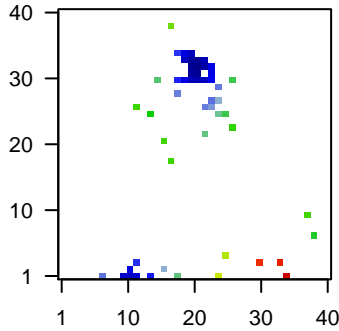
%DE = 0.08
 # genes with fdr < 0.2 = 2544 (912 + / 1632 -)
 # genes with fdr < 0.1 = 1760 (565 + / 1195 -)
 # genes with fdr < 0.05 = 1269 (361 + / 908 -)
 # genes with fdr < 0.01 = 768 (180 + / 588 -)
 # genes in genesets = 16360

<FC> = 0
 <t-score> = -0.06
 <p-value> = 0.22
 <fdr> = 0.92

Portrait



Top 100 DE genes



Global Genelist

Rank	ID	log(FC)	fdr p-value	Description Metagene
1	1556499_s_at	-1.78	2e-16 3e-13	18 x 34 collagen type I alpha 1 chain [Source:HGNC Symbol;Acc:HGNC:1024]
2	201426_s_at	-1.03	2e-16 3e-13	19 x 34 vimentin [Source:HGNC Symbol;Acc:HGNC:12692]
3	201743_at	-1.98	2e-16 3e-13	21 x 33 CD14 molecule [Source:HGNC Symbol;Acc:HGNC:1628]
4	202269_x_at	-1.49	2e-16 3e-13	20 x 34 guanylate binding protein 1 [Source:HGNC Symbol;Acc:HGNC:1024]
5	202295_s_at	-1.5	2e-16 3e-13	23 x 32 cathepsin H [Source:HGNC Symbol;Acc:HGNC:2535]
6	202554_s_at	-1.42	2e-16 3e-13	26 x 23 glutathione S-transferase mu 3 [Source:HGNC Symbol;Acc:HGNC:1024]
7	202953_at	-1.45	2e-16 3e-13	20 x 33 complement C1q B chain [Source:HGNC Symbol;Acc:HGNC:1024]
8	203706_s_at	-1.93	2e-16 3e-13	23 x 27 frizzled class receptor 7 [Source:HGNC Symbol;Acc:HGNC:1024]
9	203868_s_at	-1.64	2e-16 3e-13	23 x 31 vascular cell adhesion molecule 1 [Source:HGNC Symbol;Acc:HGNC:1024]
10	204439_at	-1.39	2e-16 3e-13	23 x 31 interferon induced protein 44 like [Source:HGNC Symbol;Acc:HGNC:1024]
11	204670_x_at	-1.19	2e-16 3e-13	19 x 33 major histocompatibility complex, class II, DR beta 1 [Source:HGNC Symbol;Acc:HGNC:1024]
12	205249_at	-1.9	2e-16 3e-13	21 x 30
13	206042_x_at	-1.11	2e-16 3e-13	25 x 4 SNRPN upstream reading frame [Source:HGNC Symbol;Acc:HGNC:1024]
14	206200_s_at	-1.39	2e-16 3e-13	37 x 10 annexin A11 [Source:HGNC Symbol;Acc:HGNC:535]
15	206932_at	-1.94	2e-16 3e-13	23 x 30 cholesterol 25-hydroxylase [Source:HGNC Symbol;Acc:HGNC:1024]
16	208306_x_at	-1.45	2e-16 3e-13	19 x 33 major histocompatibility complex, class II, DR beta 1 [Source:HGNC Symbol;Acc:HGNC:1024]
17	208621_s_at	-1.9	2e-16 3e-13	12 x 1 ezrin [Source:HGNC Symbol;Acc:HGNC:12691]
18	208894_at	-1.59	2e-16 3e-13	20 x 33 major histocompatibility complex, class II, DR alpha [Source:HGNC Symbol;Acc:HGNC:1024]
19	209189_at	-1.87	2e-16 3e-13	20 x 30 Fos proto-oncogene, AP-1 transcription factor subunit [Source:HGNC Symbol;Acc:HGNC:1024]
20	209312_x_at	-1.28	2e-16 3e-13	19 x 33 major histocompatibility complex, class II, DR beta 1 [Source:HGNC Symbol;Acc:HGNC:1024]

Global Geneset Analysis

Rank	GSZ	p-value	#all	Geneset
<i>Overexpressed</i>				
1	3.76	NULL	342	BP chromatin organization
2	3.35	NULL	358	BP mRNA processing
3	3.29	NULL	13	BP regulation of short-term neuronal synaptic plasticity
4	3.28	NULL	22	BP regulation of AMPA receptor activity
5	3.18	NULL	13	BP cerebellar Purkinje cell layer development
6	3.01	NULL	279	BP RNA splicing
7	2.93	NULL	40	BP cholesterol biosynthetic process
8	2.79	NULL	11	BP positive regulation of endothelial cell differentiation
9	2.7	NULL	14	BP animal organ development
10	2.63	NULL	24	BP replication fork processing
11	2.54	NULL	229	BP mRNA splicing, via spliceosome
12	2.53	NULL	14	BP diacylglycerol metabolic process
13	2.44	NULL	15	BP isoprenoid biosynthetic process
14	2.41	NULL	15	BP calcium ion-regulated exocytosis of neurotransmitter
15	2.32	NULL	20	BP middle ear morphogenesis
16	2.26	NULL	30	BP tRNA modification
17	2.19	NULL	10	BP negative regulation of receptor internalization
18	2.18	NULL	31	BP regulation of neuron differentiation
19	2.16	NULL	11	BP engulfment of apoptotic cell
20	2.13	NULL	17	BP urogenital system development
<i>Underexpressed</i>				
1	-15.43	NULL	43	BP antigen processing and presentation
2	-15.43	NULL	17	BP antigen processing and presentation of peptide or polysaccharide antigen
3	-15.02	NULL	460	BP neutrophil degranulation
4	-14.97	NULL	7387	BP membrane
5	-14.62	NULL	564	BP immune system process
6	-14.42	NULL	388	BP immune response
7	-13.8	NULL	4278	BP plasma membrane
8	-12.71	NULL	289	BP cytokine-mediated signaling pathway
9	-12.49	NULL	364	BP inflammatory response
10	-12.13	NULL	4740	BP cytosol
11	-11.21	NULL	417	BP innate immune response
12	-11.11	NULL	6202	BP cytoplasm
13	-11.07	NULL	88	BP cellular response to interferon-gamma
14	-10.14	NULL	159	BP response to lipopolysaccharide
15	-9.94	NULL	1500	BP signal transduction
16	-8.99	NULL	33	BP lipopolysaccharide-mediated signaling pathway
17	-8.97	NULL	1242	BP Golgi apparatus
18	-8.65	NULL	188	BP positive regulation of ERK1 and ERK2 cascade
19	-8.6	NULL	15	BP positive regulation of interleukin-8 secretion
20	-8.49	NULL	93	BP antigen processing and presentation of exogenous peptide antigen

p-values

